



Don't fake it... We make it!

Additional wiring instruction	
<i>File namn:</i> Additional wiring instruction GB PL1407XLH-STD R1	Side: 1 of 3
<i>Issued by:</i> Lennie Rosenqvist	Date: 2015-07-03
<i>Related:</i> Additional wiring instruction for: REV 1	
Maxi XL Hydro Comp STD Part No: PL1407XLH-STD	

For basic wiring and function, see "Instructions for use Maxi" Part No: PL1407

Cable colours in the extended section of P-LIGHT Maxi XL Hydro Comp

Battery cable for Power use

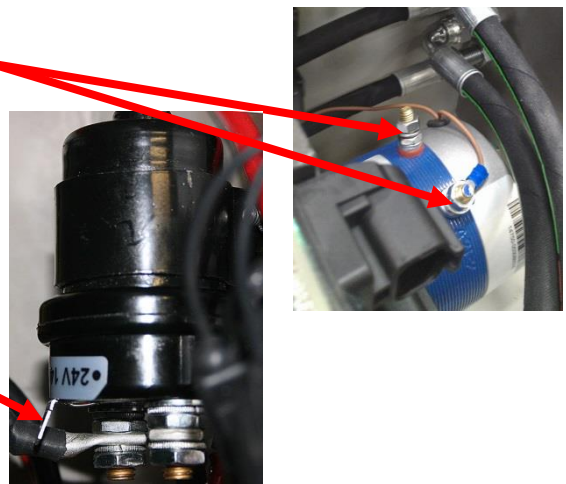
- Battery - Ground Black (6mm²)
- Batteri +24V Red (6mm²)
- Power fuse holder Max 100A (*Between batteries*)



Preparedd 16mm² cables (+ red & - black) from Maxi XL

Cable from Hydro Comp unit

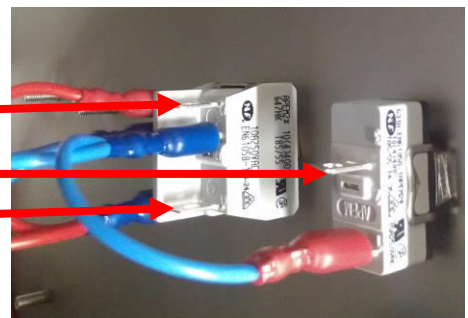
- Black Ground solenoid
(*from overheat protection engine*)



OBS: Hydro Comp STD = P & T (Not valves)

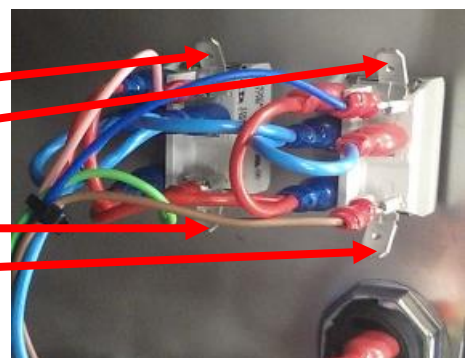
Option 1 valve

- Blue Valve 1 A
- Options
- Grey Valve 1 B



Option 2 valves

- Red Valve 2 A
- Blue Valve 1 A
- Yellow Valve 2 B
- Grey Valve 1 B



Have a nice day

Additional wiring instruction

File namn: Additional wiring instruction GB PL1407XLH-STD R1

Side: 2 of 3

Issued by: Lennie Rosenqvist

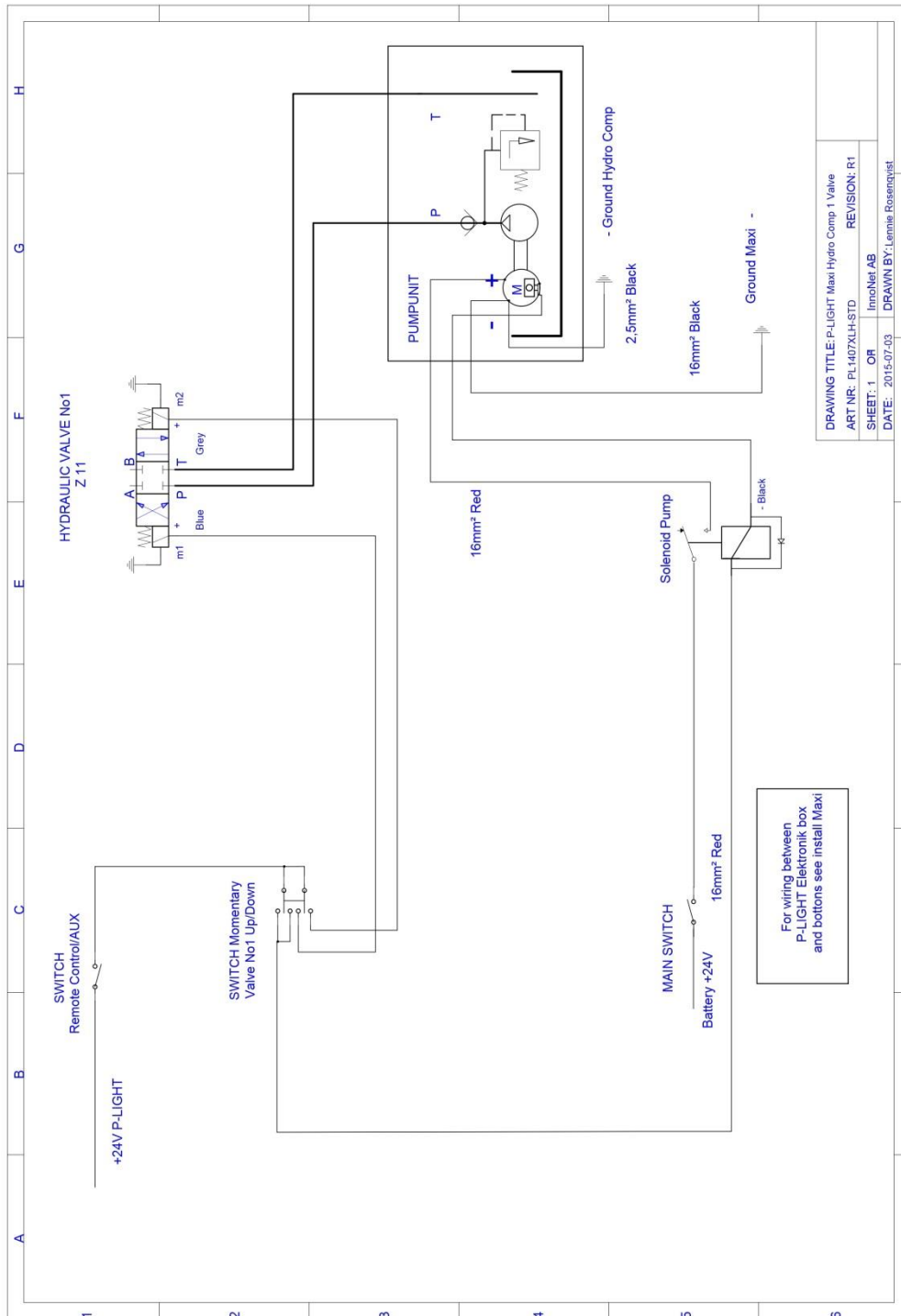
Date: 2015-07-03

Related: Additional wiring instruction for:

REV 1

Maxi XL Hydro Comp STD Part No: PL1407XLH-STD

Wiring diagram P-LIGHT Maxi XLH-STD + 1 valve



Have a nice day

Additional wiring instruction

File namn: Additional wiring instruction GB PL1407XLH-STD R1

Side: 3 of 3

Issued by: Lennie Rosenqvist

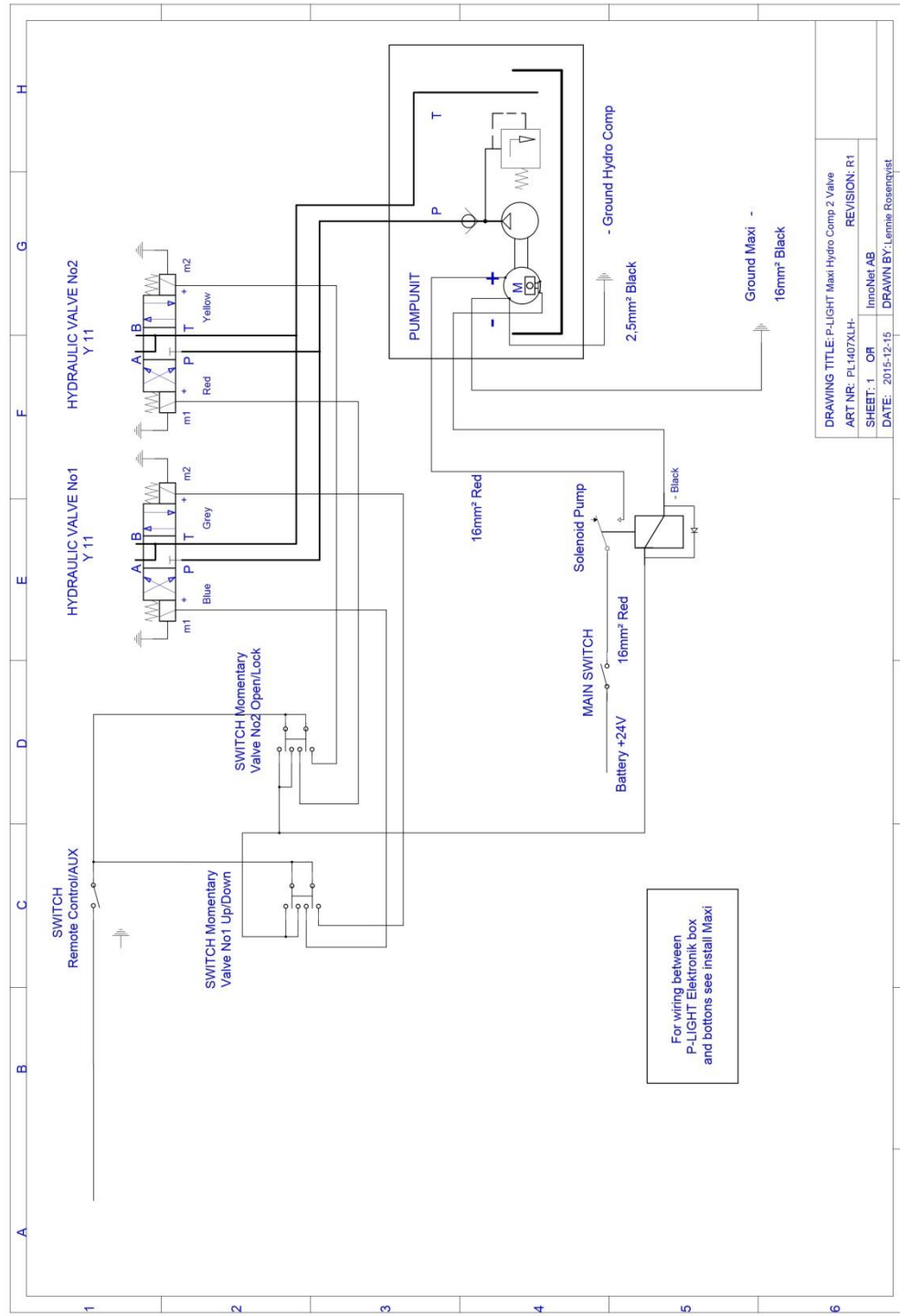
Date: 2015-07-03

Related: Additional wiring instruction for:

REV 1

Maxi XL Hydro Comp STD Part No: PL1407XLH-STD

Wiring diagram P-LIGHT Maxi XLH-STD + 2 valves



Have a nice day