

Header**Logger**

Name: SN: MSR410002

Measure

Start: 2013-03-15 11:35:34 Stop: 2013-03-28 14:16:29

Selected period of time:

Start: 2013-03-15 11:35:34 Stop: 2013-03-28 14:16:29

Zoomed

Axes: left Y-Axis, right Y-Axis

Number of channels and measures

Channels: 5 Measures: 1305756

Data state

Original data

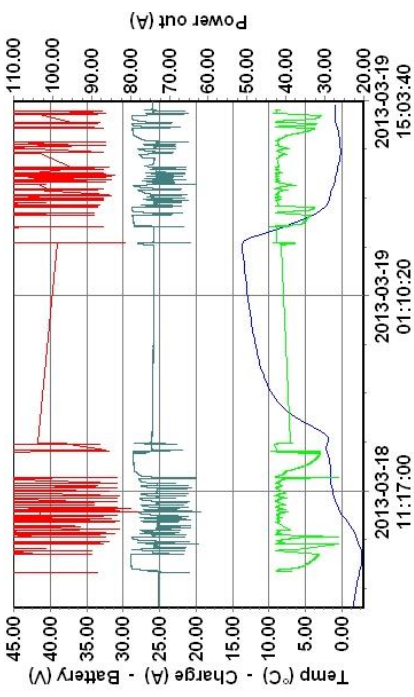
Statistics

Curve	Minimum	Maximum	Average	STDEF	Out of limits time	Within limits time
Temp, °C	-8.6	17.8	-0.4	4.64715E+00		
Charge, A	0.5165636539459	10.266868591308	6.0454328316320	2.49424E+00		
Power out, A	5.8804879188537	428.07562255859	104.38739902215	2.61872E+01		
Battery, V	18.033517837524	29.364135742187	25.907986707083	1.02445E+00		

Test report Arla Foods AB Sweden 2013Total test time: 2013-02-14 to 2013-03-28 (6 weeks)This test: 2013-03-15 to 2013-03-28 (2 weeks)Charging time (*Power in*): 40,97 hours = 247,69 Ah (*average 6.045A /hours*)PTO time (*Power out*): 119,93 minutes = 208,66 Ah (*average 104.387A /hours*)Product:

P-LIGHT Magnum with 1 charger (<10A) and 150Ah battery

Test vehicles:Volvo truck and CHEREAU trailer with mounted 2.5 ton tail lift (*hydraulic motor 2.2kW*).
(*The trailer was about 3 months old at the start of the test*)Charging:Charging is done with P-LIGHT through lighting circuits (2x2.5mm²) when equipage run (no extra cables attached). Support Charger (230V) has been installed as a backup, but according to the driver, this is never used during the test 6 weeks.*With traditional battery backup of 180Ah battery and 35 mm² special cable fitted, usually required support charging every night and still is an uncertainty of battery power to goes all working hour.*



Test Report Arla Foods Sweden 2013
P-LIGHT Magnum with one charge an 150Ah battery
Volvo truck and Chereau trailer with hydraulic backlifts 2.5 Tons (2.2 kW)

